



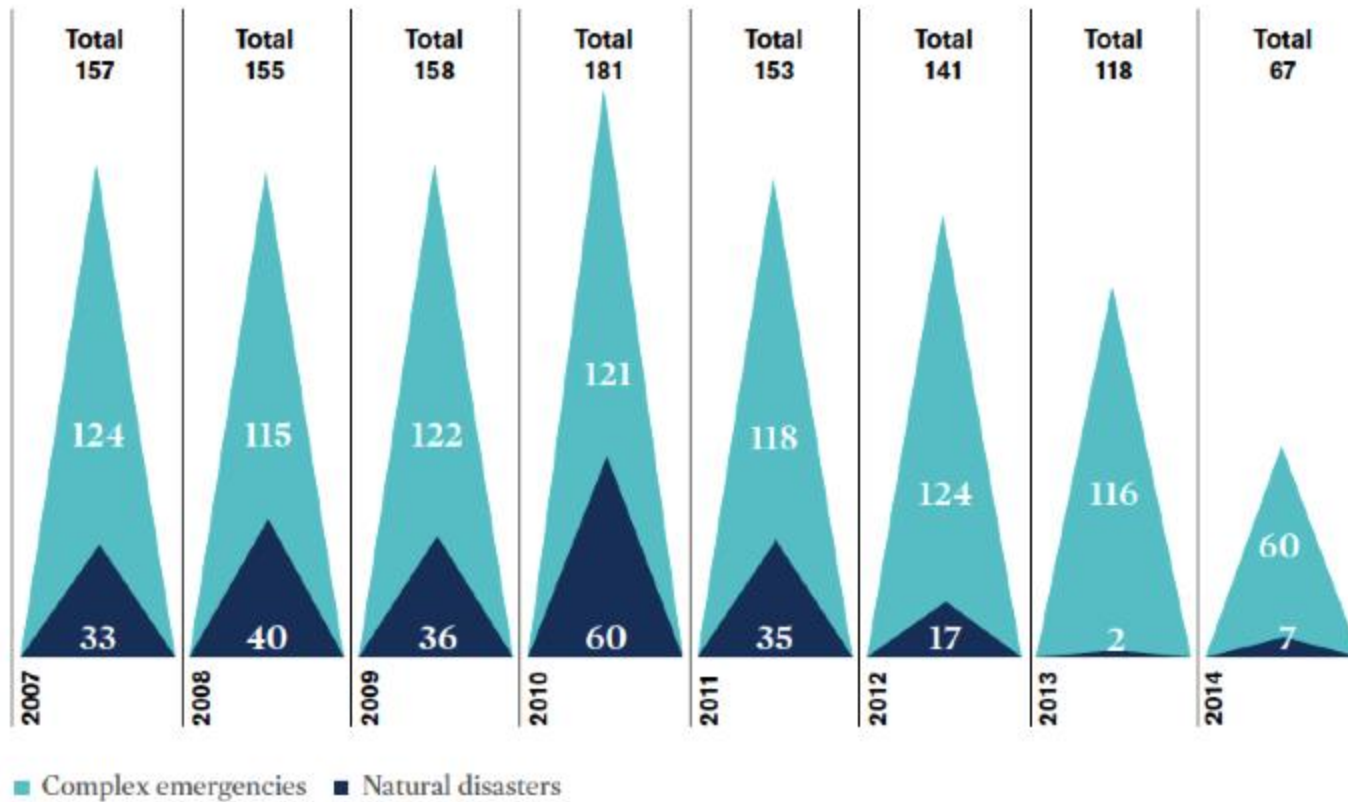
**Save the Children**

# Outline

- Introduction to the work of Save the Children
- Look at Public Health, specifically clinical services
- Pathology and Laboratory Services
  - Ebola
  - MNCH
  - Syria Health Response
- Volunteer/Work with Save the Children

# Number of Humanitarian Responses

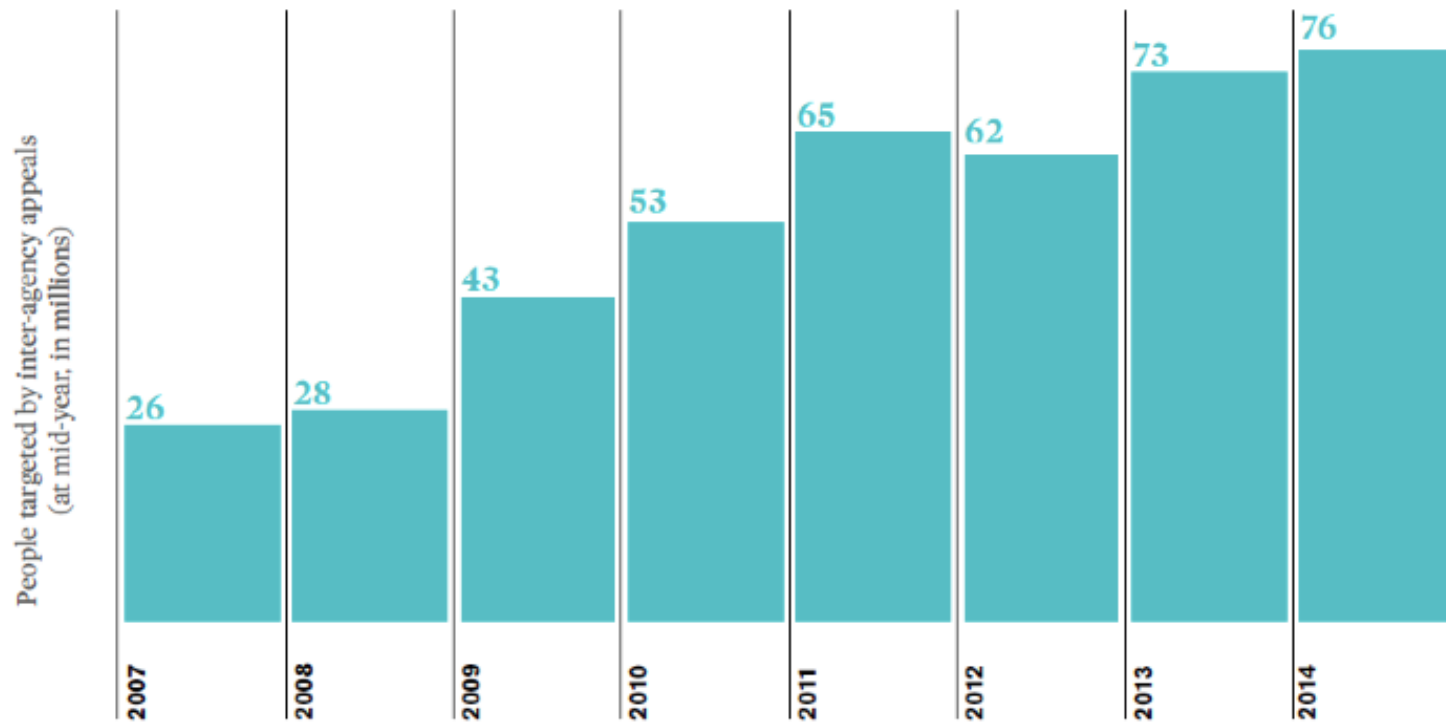
**Figure 2a / International humanitarian emergency responses, 2007–2014**



Source: FTS (11 January 2015).

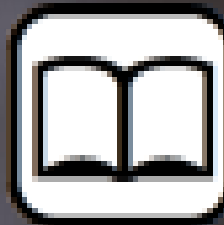
# Number of People Assisted

Figure 2b / Targeted recipients of aid



Source: OCHA, 2013(f) World Humanitarian Data and Trends.

# Multisector agency





# HUMANITARIAN PUBLIC HEALTH



# Health and Nutrition areas of focus

- **Maternal, Newborn, and Reproductive Health**
- **Child Health**
- **Maternal, Infant, and Young Child Nutrition**
- **Water, Sanitation, and Hygiene**
- **HIV**
- **Adolescent Sexual and Reproductive Health**
- **Clinical Services in Crisis Settings**



# Building a better global health response

July 2013 Merlin and Save the Children joined together.  
Strategic focus on;

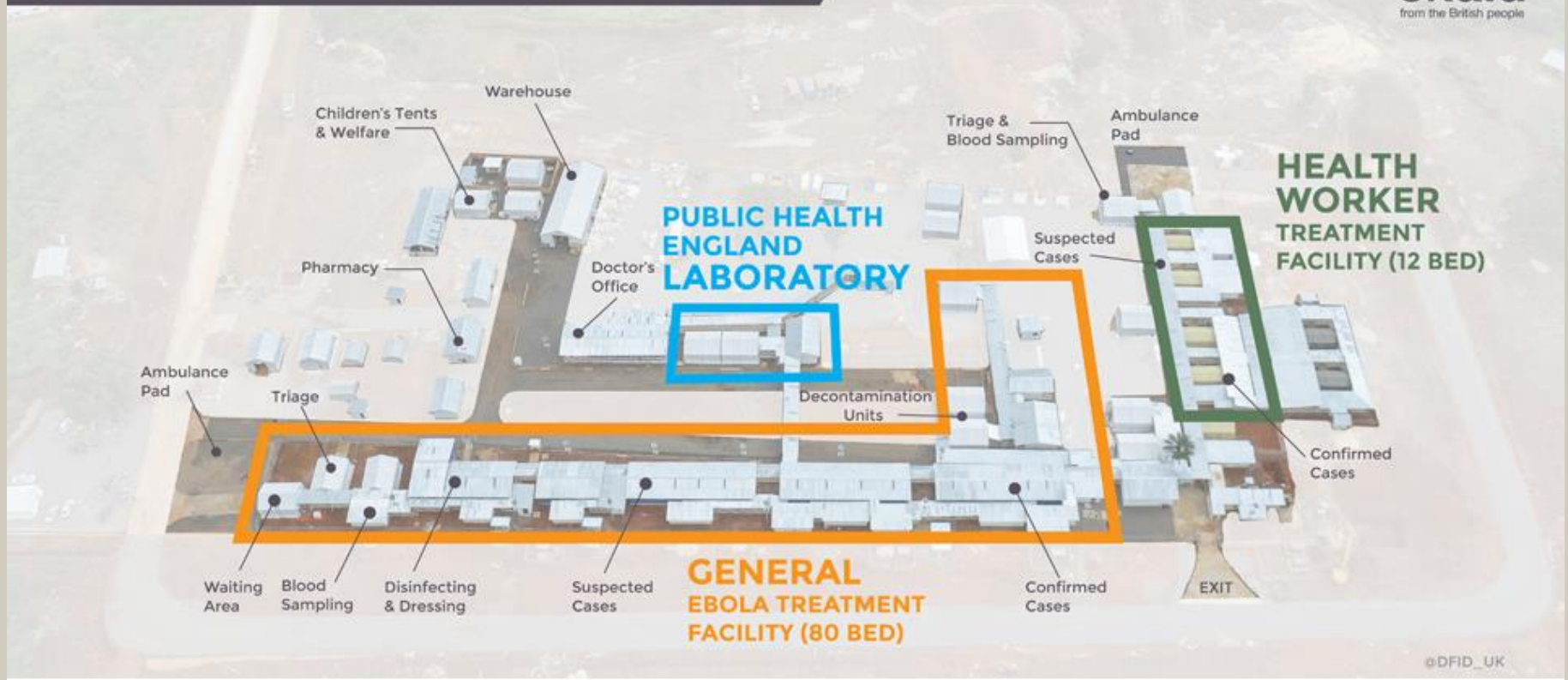
1. **Comprehensive, predictable, integrated package** of humanitarian public health services
1. Pioneer and advocate for effective delivery of **key interventions at scale**
2. Catalyse and diffuse **innovative interventions and delivery approaches** that demonstrate the most impact and value for money
3. Invest in **frontline capacity and partnerships** to build resilient and prepared health systems and communities





# The Ebola Experience

DEFEATING EBOLA: UPDATE 04/11/14  
UK EBOLA TREATMENT FACILITY



# Ebola Treatment Centre



# Child Health





# Maternal and Newborn Care



# Example: Syria Crisis Health Response





# Lab testing in Syria - PHC

- 1) Haemoglobin estimation
- 2) Hematocrit
- 3) Total white cell count
- 4) Differential white cell count
- 5) Urine analysis by dipstick
- 6) Urine pregnancy test
- 7) Genito-urinary tract  
specimens microscopy
- 8) Urine microscopy
- 9) Stool microscopy (for parasites)
- 10) Sputum microscopy
- 11) Blood glucose
- 12) HIV screening
- 13) Hepatitis B screening
- 14) Hepatitis C screening
- 15) Syphilis screening
- 16) Typhoid screening
- 17) Blood grouping
- 18) Rhesus grouping
- 19) Erythrocyte Sedimentation Rate

# The Emergency Health Unit



## **SPEED:**

Standing teams can deploy within 72 hours

## **EXPERTISE:**

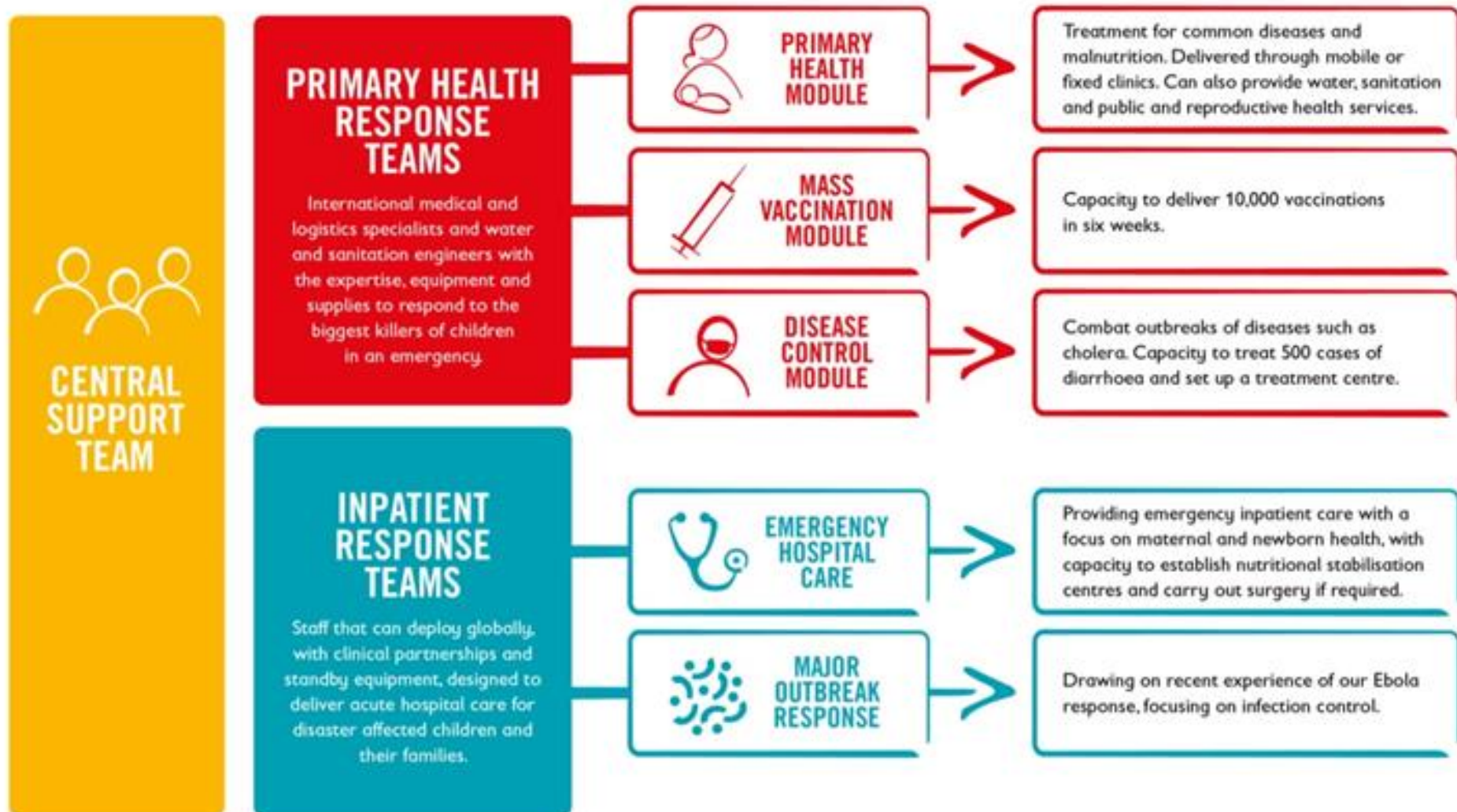
Ideal combination of clinical and operational specialists

## **REACH:**

Teams, supplies and equipment located strategically across the globe



# How the EHU is structured



# THANK YOU



**Save the Children**