

# NORTH WEST

Regional newsletter

Autumn 2017

## This issue

This Autumn issue of the Royal College of Pathologists Regional newsletter will be looking at what's been going on in your region, including news, events, funding opportunities as well as giving a summary of UK wide updates and College news.

## Contents

Title	Page
Regional Advisor	2
Local College Representatives	3
North West updates	4
College news	6
External events	9
Funding Opportunities	10

---

*Meet North West's  
Regional Advisor and  
the first two Local  
College Representatives  
in the region.*

---



## Want to Contribute?

We are looking for members to help us inform on what's going on in your area, if you have news to share, research or funding opportunities— anything you think other members would find interesting please contact:

[Jessica.zago@rcpath.org](mailto:Jessica.zago@rcpath.org)

To find out more about the College's work in North West: <https://www.rcpath.org/uk-regions/north-west.html>

# Meet the College's North West Regional Advisor

Regional newsletter

Autumn 2017



Prof Roger Hunt, North West Regional Advisor

I am a consultant histopathologist at Wythenshawe Hospital, South Manchester, which is part of the newly formed Manchester University Hospital NHS Foundation Trust. I'm also a visiting professor of cellular sciences at Manchester Metropolitan University and the new clinical lead for their MSc scientific training programme. If I'm not working, you'll probably find me on a motorway on the way to, or by the side of a hockey pitch, watching my daughters play for university, club and country.

As the RCPATH Regional Advisor for the North West, I cover Cheshire, Greater Manchester, the Isle of Man, Lancashire, Merseyside and South Cumbria. This is the largest RCPATH Region in England, outside of London. I'm looking forward this role, as I feel that the College is making good steps to re-engage with the Region's fellows and members. Better lines of communication are being re-established within the College (which, as former President Professor Underwood would say, is all of us) and I'll be liaising with you, and the College teams, on matters regarding workforce and planning, service reconfigurations, education and training, public engagement and any other important significant developments.

There have been lots of improvements and changes at the College over the last few years, with more to come. In particular, I

think the introduction of Local College Representatives (LCRs - similar to the old role of "College Tutor") is a positive move and will facilitate better communication and liaison between individual pathologists, their departments and the College. We've already appointed several new LCRs in the North West and hopefully there will be more soon, but we need you to come forward for this. Please get in touch.

Email:

[roger.hunt@mft.nhs.uk](mailto:roger.hunt@mft.nhs.uk)

Twitter: [@doctorpath](https://twitter.com/doctorpath)



**NHS**  
Health Education England

## QUALITY IMPROVEMENT IN PATHOLOGY MEETING

**Wednesday 6<sup>th</sup>  
December 2017,  
12:30pm – 17.00pm  
The Lymm Hotel,  
Warrington,  
Whitbarrow Road,  
Lymm, Warrington,  
Cheshire, WA13 9AQ**

**Please see Programme below  
for further details**

**Please contact School of Pathology  
If you have any queries:  
[Pathology.nw@hee.nhs.uk](mailto:Pathology.nw@hee.nhs.uk)**

**NHS**

Health Education England

## **PROGRAMME**

12:30 – 13:15: Lunch & Refreshments		
13:15 Introduction		
TIME	PRESENTATION	SPEAKER
13:30 - 14:20	GMC & Revalidation	Lindsey Westwood, Head of Revalidation, GMC
14:20 - 14:50	Are You A Good Educator?	Professor Simon Carly, Consultant in Emergency Medicine, Manchester Royal Infirmary
14:50 - 15:10: Tea Break		
15:10 - 15:30	Use of social media to enhance training in Pathology	Dr Roger Hunt, Consultant Histopathologist, University Hospital South Manchester
15:30 - 16:00	Careers advice for Pathologists	Mr John Goodall, Consultant in ICM, Salford Royal Foundation Trust
16:00 - 16:25	Effective training in Pathology following merger of departments	Dr Ivor Cartmill Consultant Microbiologist / Dr Theodoros Vrouchos Microbiology Trainee, Acute Pennine NHS Trust
16:25- 16:45	Questions & Answer	Dr Richard Cooke (Head of School of Pathology) & Dr Richard Hale (Associate Head of School of Pathology) HENW
17.00: Break & Finish		

# Local College Representatives in the North West

Regional newsletter

Autumn 2017



**Dr Luciane Dreher Irion** is a Consultant Histopathologist based at the recently funded Manchester University NHS Foundation Trust (MFT), formed following a merge between Central Manchester University Hospitals and University Hospital of South Manchester. Luciane's main special interest is in Ophthalmic Pathology, and over the past decade she has been working at one of the National Specialist Ophthalmic Pathology Service laboratories embedded in the Adult Histopathology Department at MFT. Other local interests are teaching and quality / clinical governance. Luciane contributes to Cellular Pathology training at MFT and undergraduate and postgraduate teaching at the University of Manchester. She is Clinical Audit Lead for the Clinical Scientific Services Division. Luciane is also National Ophthalmic Pathology External Quality Assurance (NOP EQA) scheme co-organiser.

*"Working at such a large organisation and networking with all Pathology Disciplines and cross specialty colleagues motivates me to keep contributing with the promotion of Pathology. I am looking forward to working as a Local College Representative and hope that the experience and local knowledge I was fortunate to have had by playing various professional roles will contribute to strengthen our links with the College."*

**Dr Luciane Cristina Dreher Irion, Local College Representative for Manchester University NHS Foundation Trust**

**Dr Preethi Joseph** studied Medicine and completed her MD in Pathology from Kerala, India. She joined the histopathology specialty training programme in Manchester in 2005 and was appointed as a Consultant Histopathologist at the Stockport NHS Foundation Trust in 2009. Dr Joseph's specialty interests include dermatopathology, uropathology, and gastrointestinal pathology. She is a member of the North West Histopathology Training Committee and an Examiner for the Royal College of Pathologists. Dr Joseph was College Tutor for Laboratory Medicine from February 2010 to August 2014.

*"As the Local College Representative, my aim is to assist and promote the activities of the College in liaison with the Regional Advisors, while representing my colleagues and the Trust."*



**Dr Preethi Joseph, Local College Representative for Stockport NHS Foundation Trust**

## Are you interested in becoming a Local College Representative?

The Royal College of Pathologists would like to have a designated contact person in every pathology department in England. This is a new voluntary role to support the work of the College by building a network for members without a big time commitment. If you would like to volunteer to be the Local College Representative (LCR) for your department please apply: [tinyurl.com/LCRAApply](https://tinyurl.com/LCRAApply)

For more information please contact: [Jessica.zago@rcpath.org](mailto:Jessica.zago@rcpath.org)



# Laboratory tests that help diagnose sepsis

Regional newsletter

Autumn 2017

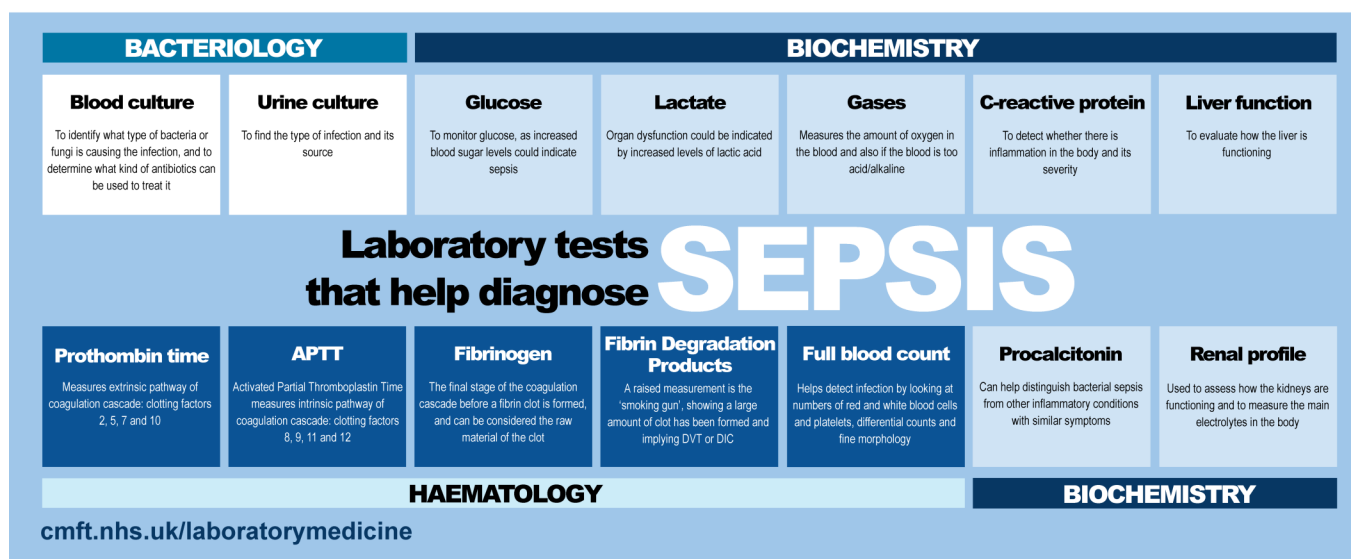
Diagnosing sepsis is very much a team effort. There are a number of tests, performed across several laboratory specialities, which can all contribute towards a diagnosis of sepsis.

Central Manchester University Hospital's infographic gives a quick guide to the laboratory tests involved:

To find out more please access [‘Infographic: Laboratory tests that help diagnose sepsis’](#).



Manchester University  
NHS Foundation Trust



## Savings targets set for new pathology hubs

A network of acute trusts in Greater Manchester has been set the biggest savings target in the country under NHS Improvement's national pathology networking plan. To find out more please access [‘Savings targets set for new pathology hubs’](#).



# North West Updates

August-October 2017

## NEW FUNDING TO TACKLE ANTIBIOTIC RESISTANCE

[New funding to tackle antibiotic resistance.](#) A new European research project aiming to help tackle the emergence and spread of drug-resistant superbugs is underway at the University's Institute of Infection and Global Health. Funded by the Joint Programming Initiative on Antimicrobial Resistance (JPI-AMR) and led in Liverpool by Professor Aras Kadioglu, the project focuses on AMR in *Streptococcus pneumoniae*; a major human pathogen causing 1.3 million deaths worldwide annually due to invasive diseases such as pneumonia, meningitis and sepsis.

## UK SALMONELLA USED TO SHED LIGHT ON AFRICAN EPIDEMIC

[Genome scientists use UK Salmonella cases to shed light on African epidemic.](#) Scientists at the University of Liverpool and Public Health England have used Salmonella genome data from a UK public health surveillance study to gain new insights into the Salmonella epidemic in sub-Saharan Africa. New research published in Genome Medicine, has identified a different and far less dangerous strain of ST313 bacteria in the UK, and identified key genomic differences that are helping scientists understand why the African strain causes such high levels of disease.

## NEW TEST SET TO TRANSFORM BREAST CANCER PREVENTION

[New test set to transform breast cancer prevention.](#) Women who have a family history of breast cancer are set to benefit from a new genetic test at Manchester University NHS Foundation Trust (MFT) that assesses breast cancer risk, with plans for it to enter clinical practice within the next six months. Developed by researchers at MFT and The University of Manchester, the test will accurately predict breast cancer risk in women who do not test positive for BRCA1/2 gene mutations. In some instances, it may also help to refine breast cancer risk in those with the BRCA1/2 mutations, according to research published in the Journal of Medical Genetics.

## LARGEST INFLAMMATORY DISEASE BIOBANK

[Universities to create world's largest inflammatory disease biobank.](#) The University of Manchester is part of a national consortium which has been awarded a £1.7 million grant to create the world's largest Immune-Mediated Inflammatory Disease (IMID) Biobank, in excess of 40,000 patients. The Medical Research Council (MRC) funded project will be delivered by the IMIDBio-UK consortium, which brings together researchers from the University of Glasgow, Newcastle University, the University of Cambridge, Queen Mary University of London and the University of Manchester.

## DIGITAL PATHOLOGY PROJECT ACROSS GREATER MANCHESTER

[Digital pathology project is under way across Greater Manchester.](#) A project to test out the latest technology in cancer pathology is under way across Greater Manchester.

Vanguard Innovation is exploring the use of digital pathology that can capture a digital image of human tissue samples. Also known as on-screen microscopy, the technique allows samples to be shared quickly among specialists and so has the potential to reduce the time it takes to reach a final diagnosis when second opinions are required.

Histopathology is the medical speciality that microscopically examines human tissue to help reach a diagnosis. Currently, that tissue is analysed using a microscope and glass slides, on which the tissue is mounted. When second opinions are required the glass slides must be physically transported to other specialists who may work at another location.

The logistics of transporting cases that require second opinions can cause delays and limits access to and the development of subspecialist histopathology services.

The Vanguard Innovation project aims to secure the support of histopathologists for the latest technology.

The project will cover all seven trusts that provide pathology services in Greater Manchester and will test out the potential for a cellular digital pathology network for the whole city region.

# College News and activities

August-October 2017

## Continuous Quality Improvement Mentoring Scheme

Do you need some support and encouragement with a quality improvement activity/project? Did you know there is a new mentoring scheme to support College members who are seeking to develop or improve their continuous quality improvement (CQI) skills?

The scheme will work by matching individuals with experienced CQI mentors whose expertise best fits the member's goals. Both parties will work together in partnership until the CQI activity has been completed.

If you would like to find out more, or be involved in this exciting mentoring scheme, please visit our [CQI Mentoring Scheme webpage](#).

## Updated cancer dataset appendices

Updated dataset appendices providing up-to-date information on staging using UICC TNM 8 are now available. TNM 8 should be used for all tumours diagnosed after 1 January 2018. Appendices are available on the [College website](#).

## Medical Examiners - announcement

The Royal College of Pathologists (RCPATH) welcomes Lord O'Shaughnessy's announcement today that a national system of independent medical examiners will be introduced from April 2019. The College has long campaigned for the implementation of this important patient safety initiative, which was recommended by the Shipman, Mid Staffs and Morecambe Bay inquiries.

While rapid wholesale implementation would be ideal, the proposed phased approach will allow the many agencies involved to prepare and is a pragmatic solution to a complex scheme. It is important that the second phase follows quickly to ensure that the benefits of the medical examiner system are applied in all healthcare settings.

Pilot studies have demonstrated that medical examiners ensure that death certificates are accurate, cases are referred appropriately to the coroner and most importantly, that bereaved relatives have the opportunity to ask questions and raise any concerns they may have. Medical examiners are also ideally placed to identify trends relating to deaths and highlight areas for further investigation, giving relatives the answers they deserve and improving care for future patients.

As well as two continuing pilot sites, several hospitals have already taken steps towards implementing a limited medical examiner system. While typically only looking at deaths in hospital, this is a step in the right direction and can only make implementation of the full programme easier. The RCPATH is sharing experience and lessons from the pilots and early implementer sites to support more hospitals to introduce a similar system.

The initiative is also being aligned with the 'Learning from deaths' work, which is already being undertaken in all trusts. The combination of this important project with the imminent introduction of medical examiners will help healthcare professionals to learn lessons from mistakes and improve the care they provide for future patients. The Royal College of Pathologists strongly backs this process and is committed to providing medical examiners, of whatever specialty, with the training and support they need.

## New Publications

[Dataset for the histopathological reporting of thymic epithelial tumours](#)

## New Consultations

[Dataset for the histopathological reporting of uveal melanoma](#)

[Dataset for histopathological reporting of anal cancer](#)

[Tissue pathways for cardiovascular pathology](#)

[Dataset for histopathological reporting of ocular retinoblastoma](#)

# College News and Activities

August-October 2017

## Keep our services running - the challenge of the widening gap in the pathology workforce

[As part of National Pathology Week, College Registrar Dr Rachael Liebmann reflects on the increasing need to address shortages in the pathology workforce.](#)

We gave the Minister a taste of the wonderful developments in our profession and the important role played by our Fellows in healthcare. We outlined advances in cancer diagnosis, the importance of digital pathology, informatics and genomics. We also raised the need for a sense of proportion in consolidation plans, movement on the national laboratory medicine catalogue and the introduction of medical examiners (which has been recently announced).

However, for me, the most striking aspect of the meeting was the fact that we kept returning to one central issue – the dwindling number of qualified professionals available to keep our services afloat.

8  
NOV

## Inspiring investigations - members share their patient stories

When asked to picture 'what a pathologist looks like', some might only imagine doctors squirreled away in labs, bent over microscopes. But in practice, so much of the work pathologists and scientists do revolves around caring for patients. From aiding the speed of critical diagnoses, to helping people manage ongoing illnesses, pathologists touch people's lives through prevention, diagnosis and treatment. [To celebrate National Pathology Week, five of our members highlight memorable cases from their careers working with and for patients.](#)

6  
NOV

## Improving physical health of adults with severe mental illness

[College VP Dr Lance Sandle on how IT can help tackle poor health of people with severe mental illness.](#)

"People with severe mental illness are not getting the right tests at the right time to diagnose, manage and monitor their physical health. This leads to poorer health and exacerbates existing conditions."

10  
OCT

## Essential Services Laboratories

[College statement on Essential Services Laboratories proposed by NHSI.](#) A recent announcement from NHSI proposes that pathology services be delivered via 29 net-works to deliver efficiency savings. Each network known as Essential Services Laboratories, will have a hub laboratory and several spokes. This forms part of the implementation of the recommendation of Lord Carter's 2016 report on operational productivity.

While support to improve the value of pathology- services is welcomed, there are concerns about how realistic some of the proposals are, particularly without significant investment in workforce, IT, transport and buildings, and the potential detrimental effect on training and research. A compendium of Bulletin articles in which members share their experience of consolidation and the lessons they have learnt [is available](#). We have shared it with MPs and other stakeholders. You may wish to bring it to the attention of the teams leading on developing your local network.

4  
OCT

# College International News

## International Pathology Day - 15 November

International Pathology Day took place on 15th November.

Visit the College's [website](#) to watch our videos, download our [#PathologyDay Posters](#)



### International

#### IPD Roundtable: Pathology & Cancer Control

The College will be hosting a roundtable webinar for IPD this year. The roundtable will focus on the **role of pathology in implementing the World Health Organisation's (WHO) 2017 [Cancer Resolution](#)**. Organised in partnership with [The Pathologist](#) magazine and chaired by Dr Suzy Lishman, the roundtable will bring together a panel of experts to discuss and debate ways to ensure that national cancer control plans adequately address the provision of effective, affordable and sustainable pathology services as part of the global effort to strengthen and improve cancer control.

The roundtable will be filmed and broadcast live over the Internet from BMA House in London on Wednesday 15<sup>th</sup> November and will be accredited by the College for CPD/CME. [Register online](#) to join our global conversation.

A limited number of places are available in the live studio audience. If you could like to attend in person, please email the International Department at [international@rcpath.org](mailto:international@rcpath.org).

#### Prudential Ride London-Surrey 2018

Are you a keen cyclist? Register now for a place in the 2018 Prudential RideLondon-Surrey 100 challenge, which is taking place on **Sunday 29<sup>th</sup> July 2018**.

Prudential RideLondon is the world's greatest festival of cycling where more than 26,000 amateur cyclists take on a cycling challenge like no other through London and Surrey on a similar route to that of the London 2012 Olympic Road Cycling Races. The College is a Golden Bond Charity member and has guaranteed places for 2018. If you are interested in cycling for the College, please contact **Deborah Ko** ([deborah.ko@rcpath.org](mailto:deborah.ko@rcpath.org)).

#### Become a Mentor

The International Trainee Support Scheme (ITSS) provides structured support, advice, mentoring and guidance to overseas doctors and scientists who are planning to sit the College's FRCPATH Part 1 and Part 2 examinations. The scheme has been piloted amongst doctors from Egypt, India, Iraq, Sudan and Pakistan who are intending to take the Histopathology Fellowship examinations and we will soon be recruiting a second intake for 2017-18/19, which will be open to doctors from all countries.

**Scheme Mentors** who will be matched with Trainees who will provide advice, guidance and support to Trainees as they work to address any gaps or weaknesses in their knowledge, skills, understanding or behaviours in preparation for the examination.

If you are interested in becoming a mentor please complete our online form:

<https://www.surveymonkey.co.uk/r/itss-mentor>



# External Events in North West and nearby regions

August-October 2017

## Autopsy Update Day - 23 November 2017

**Location:** St James University Hospital, Beckett Street, Leeds, LS9 7TF, United Kingdom

**Topics to include:**

- Deaths from radiation - Dr Nat Cary
- Deaths from cerebrovascular disease - Dr James MacKenzie
- Deaths in agriculture - Dr Matt Lyall

## Genomics in Medicine - 24 November 2017

Keeping up to date with the latest development is an integral part of good medical practice. Continuing medical education is an ongoing process, outside formal undergraduate and postgraduate training, that enables individual doctors to maintain and improve standards of medical practice through the development of knowledge, skills, attitudes and behaviours.

This course tries to bridge the gap between pathologists and genomics knowledge. We have identified a significant need for education on genomics amongst pathologists; a basic understanding on the current molecular diagnostics offer is essential prior to the adoption of genomic-based medicine.

## Pathology Reporting Manchester 2017 - 7 December 2017

Pathology Reporting is a special one-day pathology speech technology event for Histopathologists. This event is being held on 7th December in Piccadilly, Manchester. To register to attend Pathology Reporting 2017 in Manchester, please email: [lola.moore@talkingpoint.uk.com](mailto:lola.moore@talkingpoint.uk.com) or call +44(0)1908 565 663 for further information.

## Post ASH Significant Highlights—Manchester

The American Society of Haematology meeting is now the most important meeting in the annual conference calendar where delegates from around the world present their most innovative scientific and clinical data. Recently it has become more difficult for UK trainees and consultants to attend due to restrictions in study leave budgets, time constraints and limitations on industry sponsorship.

The Post ASH series of meetings will provide an overview of the pertinent topics presented at ASH, as well as late breaking news and is suitable for consultants, trainees, nurses and pharmacists working in haematology.

## Sepsis Unplugged 2018 - 5-6 February 2018

Sepsis Unplugged is a conference done a little differently. It leaves attitudes and egos at the door, brings together all healthcare professionals and patient groups as equals, and asks the questions that will shape better sepsis care. Conferences like this are crucial: we must act decisively to save the thousands of lives sepsis claims every year – more than breast cancer, bowel cancer, prostate cancer and HIV/AIDS combined. At Sepsis Unplugged, a range of practical workshops, discussion panels and interactive sessions lead the way for a truly novel, inspiring experience.



# External Funding Opportunities

*We host a comprehensive list of funding opportunities for members on the College website [here](#)*

## November

### 27th

WELLCOME TRUST, [Investigator Awards](#)

WELLCOME TRUST, [Senior Research Fellowship in Public Health and Tropical Medicine](#)

WELLCOME TRUST, [Senior Research Fellowships in Clinical Science](#)

### 29th

BSAC, [Research Grant](#)

BSAC, [Education Grant](#)

### 30th

WELLCOME TRUST, [Intermediate Fellowship in Public Health & Tropical Medicine](#)

WELLCOME TRUST, [Training Fellowships in Public Health and Tropical Medicine](#)

## December

### 1st

JOURNAL OF COMPARATIVE PATHOLOGY, [Travel Bursary Scheme \(Animal Pathology\)](#)

PATHOLOGICAL SOCIETY, [Public Engagement Scheme](#)

PATHOLOGICAL SOCIETY, [Open Scheme](#)

### 15th

WELLCOME TRUST, [Research Career re-entry Fellowships](#) (Full application)

WELLCOME TRUST, [Sir Henry Wellcome Postdoctoral Fellowships](#) (Full application)

MICROBIOLOGY SOCIETY, [Society-supported Conference Grants](#)