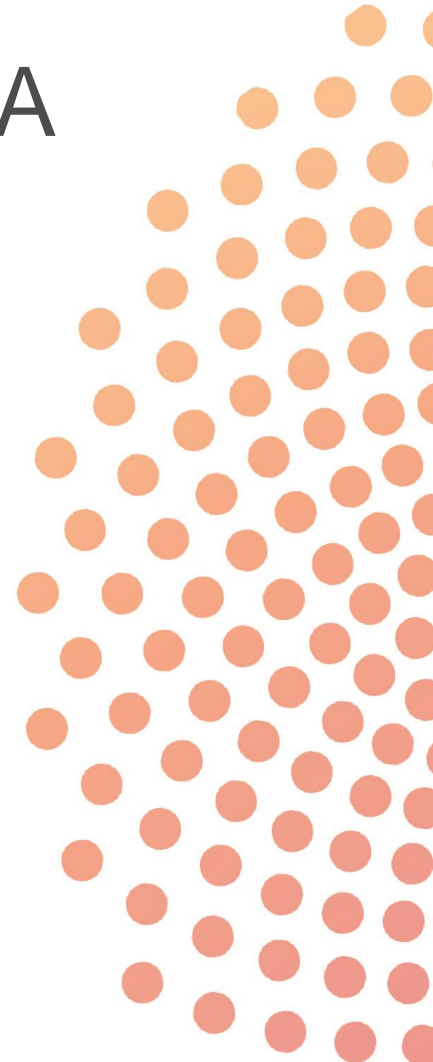


IRAQ: THE ROLE OF THE DIASPORA PROFESSIONALS

Dr Ferial Ahmad, FRCPath
Inter-Collegiate Iraq Liaison Group

Intercollegiate Iraq Liaison Group (ICILG)

مجموعة إرتباط الخليات الطبية الملحقية مع العراق



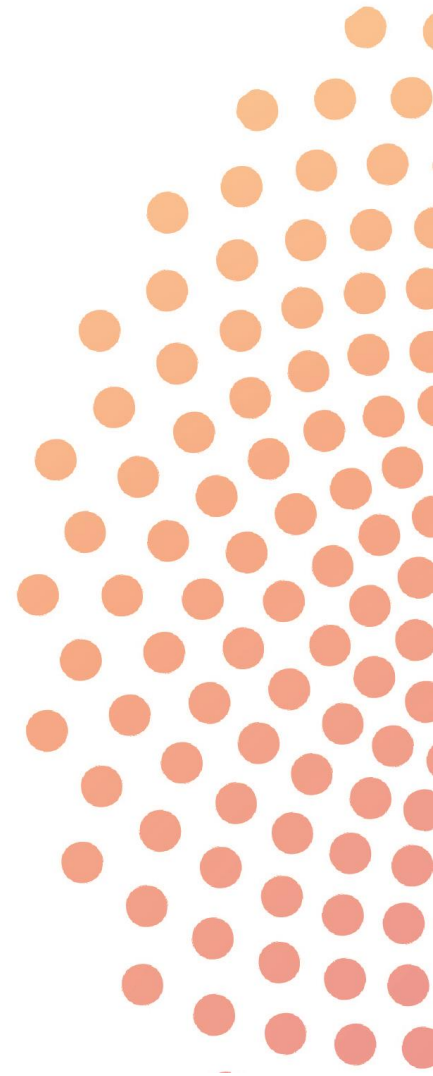


The Royal College of Pathologists

Pathology: the science behind the cure

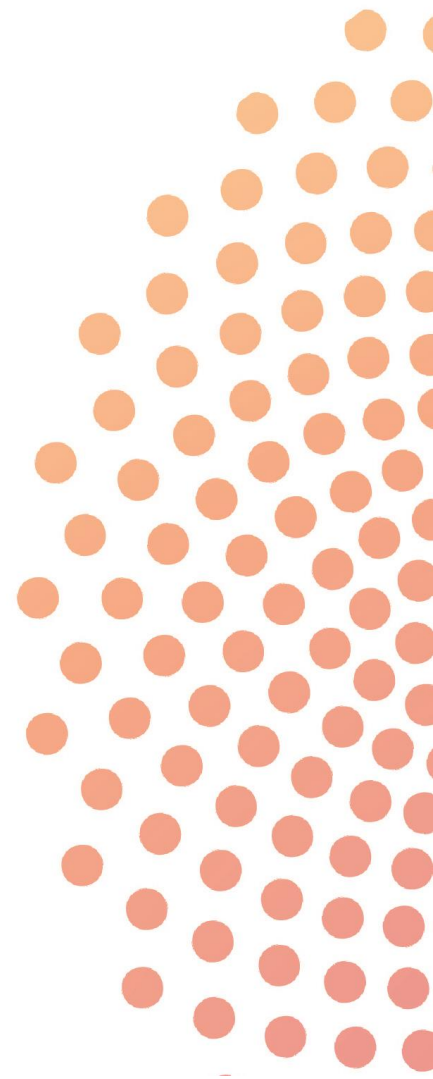


- Iraq had very good medical services and education until 1980s, mostly based on UK system
- Pathology: recognition of DCP course; Part 1 MRCPPath
- Wars and sanctions since 1980: serious deterioration in health services
- Dozens of Pathologists in UK offering support to Iraq



SUPPORTING PATHOLOGY IN IRAQ

- 2006 ICILG Committee: to coordinate support of Royal Colleges and health services and training in Iraq
- ICILG Pathology committee: 30 Fellows
- February 2011: meeting with President of RCPATH
- March 2011: plan to support Pathology in Iraq
- Project with KRG:
 - Easy Access and transport
 - Existing collaboration between pathologists in UK & KRG
 - Full support of Health and Educational authorities

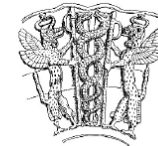


SUPPORTING PATHOLOGY IN IRAQ

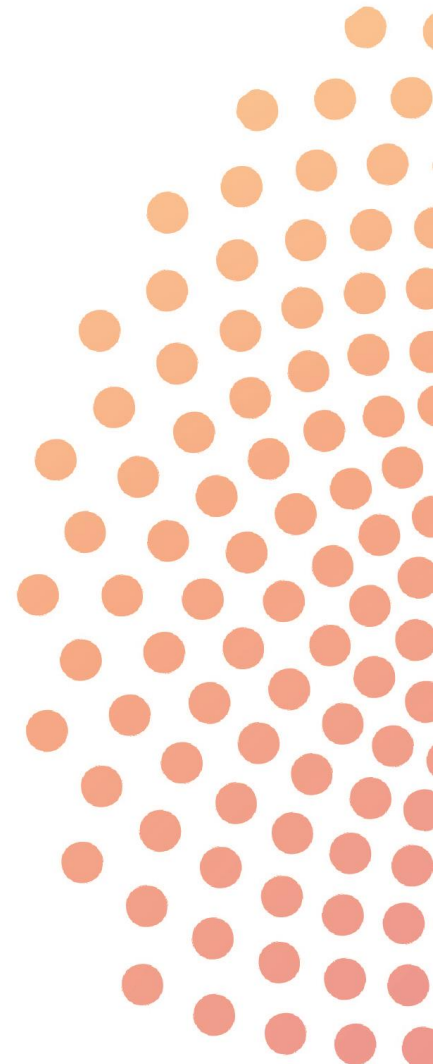
- October 2011: Team of 13 Fellows visited Kurdistan Region of Iraq to evaluate Pathology services and hold workshops in Erbil: Ferial Ahmad, Firiad Hiwaizi, Maysoon Al-Zahawi, Dillshad Shareef, Waria Mohamid, Motez Al-Izzi, Jamal Uraiby, Walid Al-Wali, Kamiran Saied, Ayad Atra, Nuha Haboubi, Nadim Haboubi, and Maadh Aldouri



OCTOBER 2011 – VISIT PROGRAM



- Visit all main hospitals, central laboratories and blood banks of Erbil, Sulaimaniya and Dhouk
- Hold 2-day workshop at MoH and two Erbil Hospitals
- Meetings with senior officials of MoH, MoHE and KBMS
- Meetings with consultants and trainees
- Detailed evaluation of laboratory services in KRG hospitals
- Preparation of detailed report of status of laboratory services and recommendations for improvement

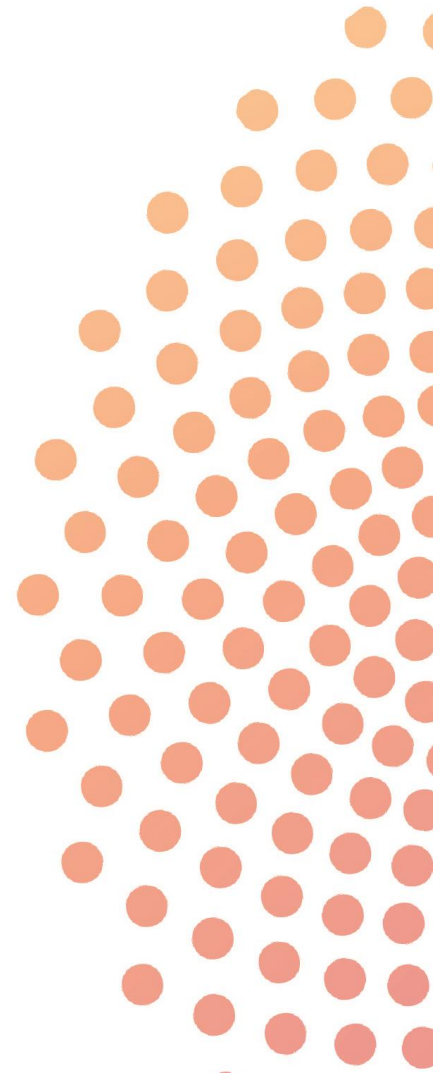






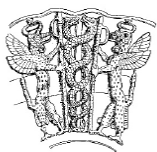
SUPPORTING PATHOLOGY IN IRAQ

- March 2012: second visit to Erbil and Sulaimaniya by 3 ICILG Path members to discuss report with senior officials and advise on Erbil Central Bank management
- ICILG-Path report passed to RCPATH senior officers for information and discussion- report was appreciated and endorsed by College
- June 2012: 3 senior officials from MoH, MoHE and KBMS invited to visit RCPATH and Pathology Departments
- RCPATH endorsed further collaboration with project, evaluate Pathology training programs in Iraq and establishing FRCPath examination centre



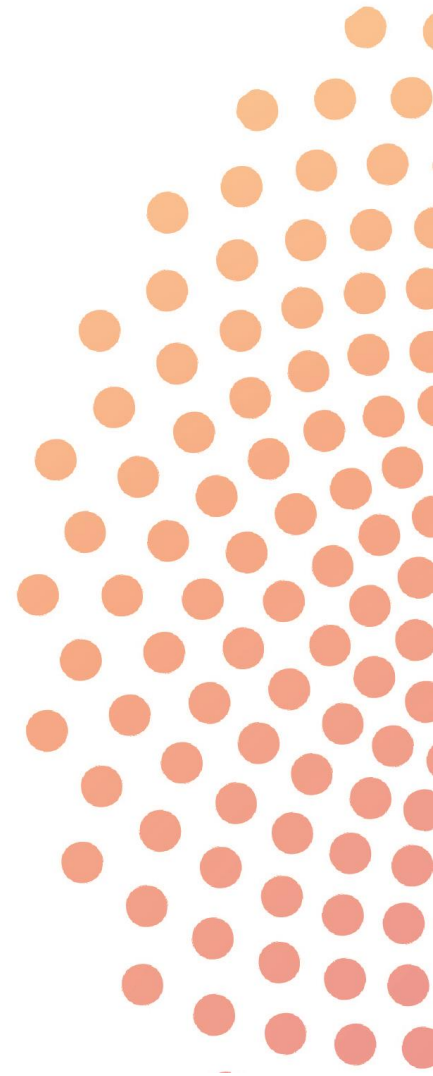
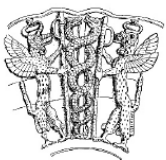
VISIT OF RCPATH DELEGATION

December 2012:
President, Director of
Training, Director of
International Affairs,
Director of
Examinations, Manager
of International Affairs
and 4 ICILG-Path
members



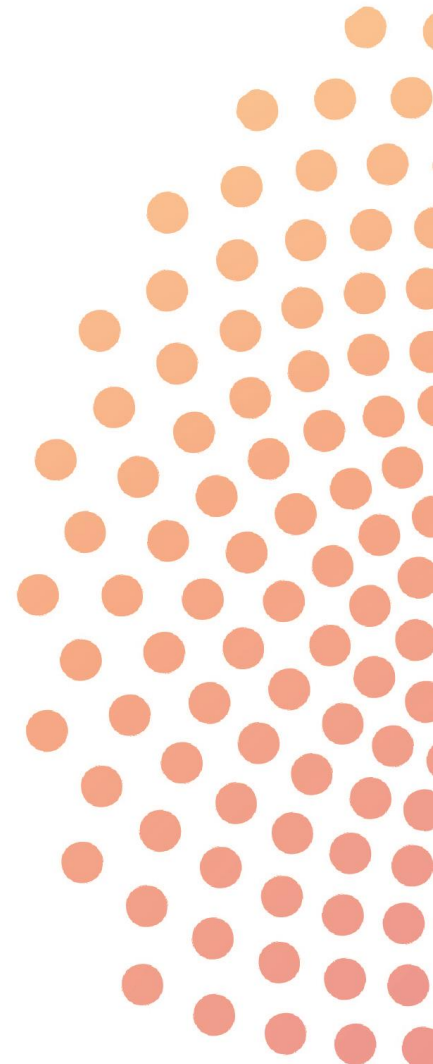
RCPATH VISIT FINDINGS

- Excellent training material
- Very good equipment and facilities
- Dedication and commitment of trainers, managers and lab staff, and enthusiasm of trainees
- Candidates in Pathology training programmes are capable of sitting Part 1 FRCPath examinations
- Demonstrable leadership and support at regional and governorate levels
- Endorsement of ICILG report and recommendations

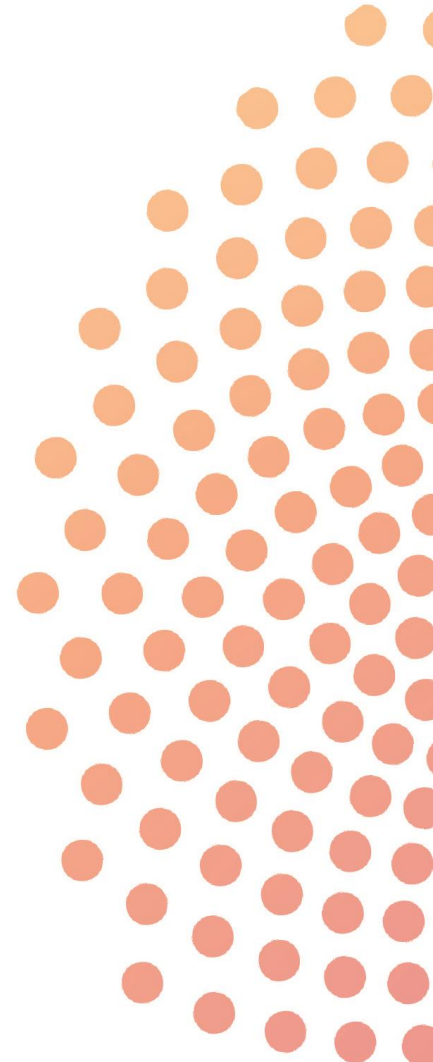


RCPATH RECOMMENDATIONS

- Collaboration and support of for training, competency assessment, deliver train the trainer workshops
- Gap analysis between RCPATH training curricula and training existing programmes in Iraq
- Establish centre for delivery of FRCPath part 1 examinations in Kurdistan (in the first instance) in Autumn 2013
- Include Iraq's training centres as partners in the RCPATH pilot of its International Pathology Training Scheme (IPTS)
- Discuss with UK Foreign and Commonwealth Office feasibility of short term visas for trainees from Iraq



- October 2013: Train the Trainer 2-day workshop in Erbil, Kurdistan
- Attendance by more than 50 trainers from all over Iraq
- Establishing Regional Committee to oversee Pathology services and training in Kurdistan Region of Iraq
- Carrying out gap analysis between curricula of RCPATH and training programs in Iraq.
- Identifying training posts for candidates who pass part 1 FRCPath examinations









The Royal College of Pathologists
Pathology: the science behind the cure

PATHOLOGY IS GLOBAL

Wednesday 5th November 2014
The Royal College of Pathologists

