

Regional Advisor

Role Description

Nominated by:	Self-nomination
Appointed by:	Chair of the England Regional Council
Accountable to:	Elected England Council Member (see Regional Council Structure in Appendix A)
Term of office:	Three years from the date of the appointment. Term is renewable but through a competitive process, not automatic.

The College

This College has a key role in the professional aspects of pathology services in the development and delivery of health care. Those holding office in the College provide professional leadership and thereby contribute at a national level to the maintenance and development of pathology services and the quality of care that patients receive. The College expects its office holders to be proactive and to provide leadership, not only in their own specialty, but also in pathology in general, in the wider context of health services. The College's influence extends to all sectors of healthcare provision.

The College is its membership, and the coordination, coherence and consistency between national, regional and local activities is paramount. All office-holders are expected to subscribe to these principles. The President is supported by a team of six honorary officers, including three Vice-Presidents. The Vice-Presidents play a key role and work together to ensure coherent College advice and guidance across their three areas of activity at the international, national, regional and local levels through the College Directors and England regional representatives. Devolved Nation representatives provide professional leadership within their region. The College is also expected to provide advice and guidance on specialty-specific issues nationally, regionally and locally. The Specialty Advisory Committees provide professional leadership within their specialty.

Background to the role

In 2015, the College's Trustee Board reviewed regional representation and decided to create a new role of Regional Advisor to replace the Regional Lead role. A Regional Advisor would represent each of the following 11 regions: East Midlands; East of England; Kent, Surrey & Sussex; London; North East; North West; South West; Thames Valley; Wessex, West Midlands, Yorkshire & the Humber. Regional Advisors are the College's link with members in these regions. Regional Advisors are expected to represent all pathology specialties and areas of College work (learning, advocacy and professionalism) within their region.

Responsibilities

- Inform the Member and Regional Engagement Team of significant developments concerning regional pathology service reconfiguration, workforce and education/training issues.
- Disseminate any information deemed relevant on request of the College's President or Council.
- Periodically liaise with the appropriate England Council Member for information to be included in ECM's written report to College Council.
- Periodically liaise with the newly created Regional Specialty Representatives.
- Periodically liaise with the designated Public Engagement Regional Coordinator(s).
- Opportunistically signpost regional Fellows and Members to resources and information on the College website.
- Attend two England Regional Council meetings per year (usually held in March and October).
- Support regional public engagement activities such as those planned for National Pathology Week.
- Regional Advisors will not be expected to carry out duties associated with the old College Tutor role such as CPD and job description reviews as these are now centralised functions.

Eligibility

- Be a Fellow of the College.
- Have a keen interest in local and regional issues impacting on pathology service and training.
- Hold or have held a substantive consultant post.
- Have discussed the role with their employer and have agreement to undertake the role.

Support for the role

- After appointment, and to encourage local Trust support for the role, the College's President will write to each Medical Director confirming the Regional Advisor post if required.
- The Member and Regional Engagement Team, based in London, will provide administrative support and deal with any general enquiries.
- A bi-monthly newsletter for the UK is produced in both pdf and word formats which can be re-purposed to produce regional updates.
- Regional Advisors will be able to access over 600 webpages of regional information and e-resources on the College website.
- Public Engagement Grants can be applied for to support local and regional initiatives.
- Advice and support offered by England Council Members (North, Midlands and East, London, South).
- Travel and expenses will be paid to Regional Advisors for attendance at meetings in line with the College's expenses policy.
- It is anticipated that the Regional Advisor role will require a commitment of approximately one hour per week.

How to apply

Fellows are encouraged to self-nominate. Potential candidates are asked to submit a short (one side of A4) statement of interest and a current CV. This process will be co-ordinated by the Member and Regional Engagement Team.

The selection process includes consultation with a constituency comprised of:

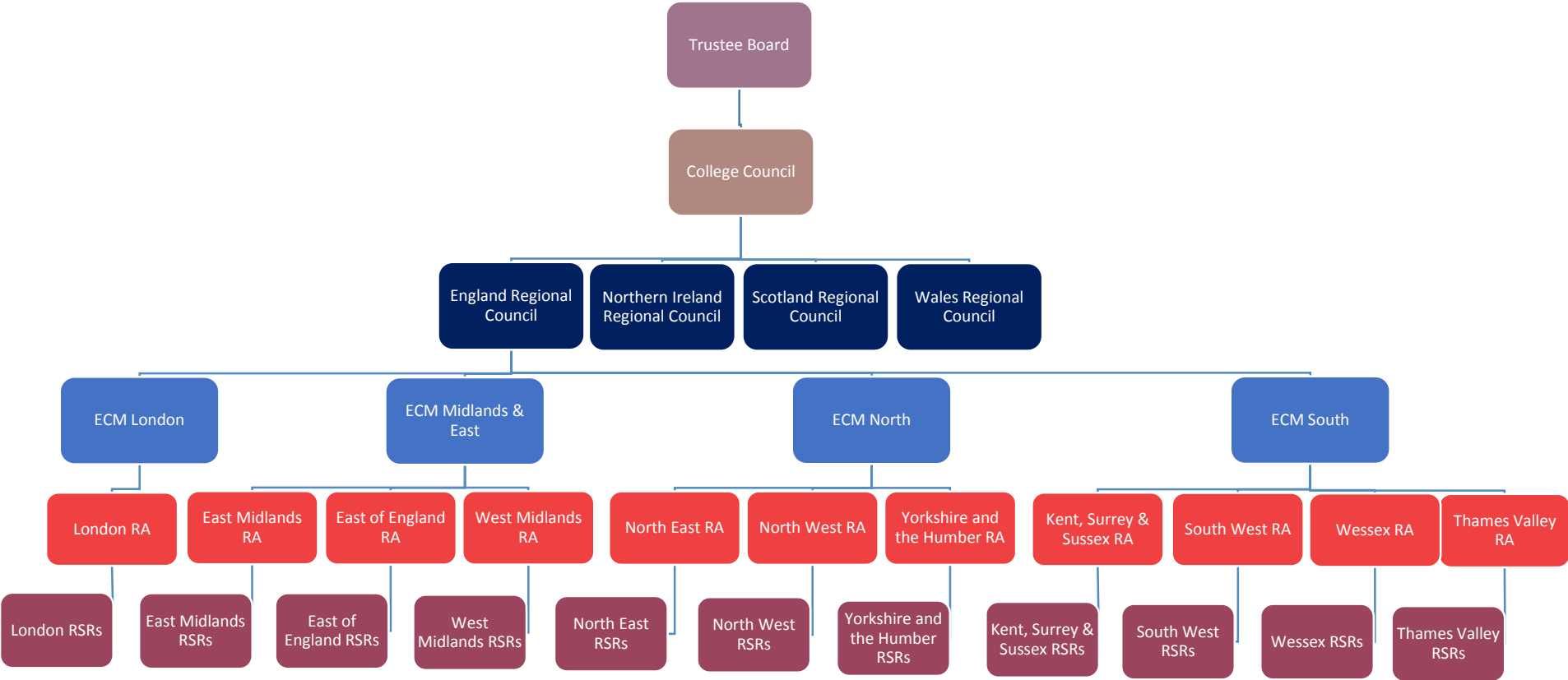
- The President
- The Vice-Presidents in Communications, Learning and Professionalism
- The Registrar
- Appropriate Elected England Council Member

If there is more than one applicant a ballot will be held amongst the above constituents. A simple majority will suffice and in the event of equality of votes the President of the College will have a casting vote (which he or she can delegate).

All applications will be considered for appropriateness and the College may choose not to make an appointment and re-advertise the role for a particular region.

Regional Advisors will serve for three years from the date of the College's AGM and be eligible for re-election for another term by following a competitive process.

Appendix A: Regional Council Structure



*ECM: England Council Member
*RA: Regional Advisor
*RSR: Regional Specialty Representative