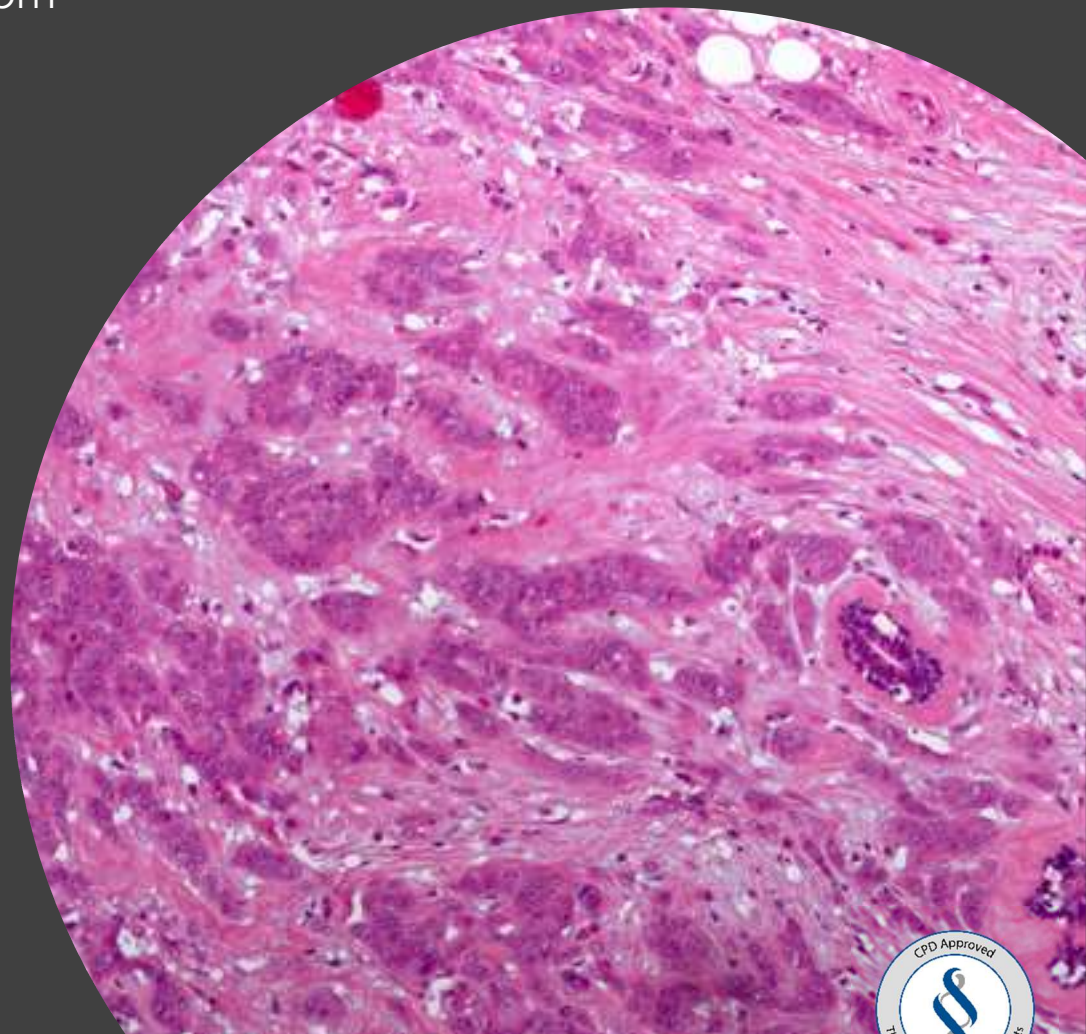


# NOTTINGHAM

## Breast Pathology

### Online Masterclass

Thursday 27 May, 2021  
9.15am – 5pm



University of  
**Nottingham**  
UK | CHINA | MALAYSIA

[nottinghambreastpathologymasterclass.com](http://nottinghambreastpathologymasterclass.com)

# NOTTINGHAM Breast Pathology Online Masterclass

Addressing Challenges in Diagnostic Breast Pathology

---

**The renowned masterclass moves online in 2021, focusing on addressing challenges in diagnostic breast pathology.**

With a faculty of leading experts from across the world, the masterclass is ideal for practising pathologists, pathology fellows and trainees.

## Scientific Program

- The use of IHC in diagnostic breast pathology
- Improving concordance in breast cancer reporting
- An update on receptor assessment in breast cancer and pitfalls
- WHO updates on breast tumour classification
- Diagnostically challenging breast lesions
- Diagnostic challenges on core biopsies
- Approaches to diagnosis microscopy workshops
- Meet the experts

## Faculty

Professor Ian Ellis (Nottingham)  
Professor Cecily Quinn (Dublin)  
Professor Emad Rakha (Nottingham)  
Dr Elena Provenzano (Cambridge)  
Dr Abeer Shaaban (Birmingham)  
Dr Areeg Abbas (Nottingham)

## Nottingham Breast Pathology Masterclass Series 2021

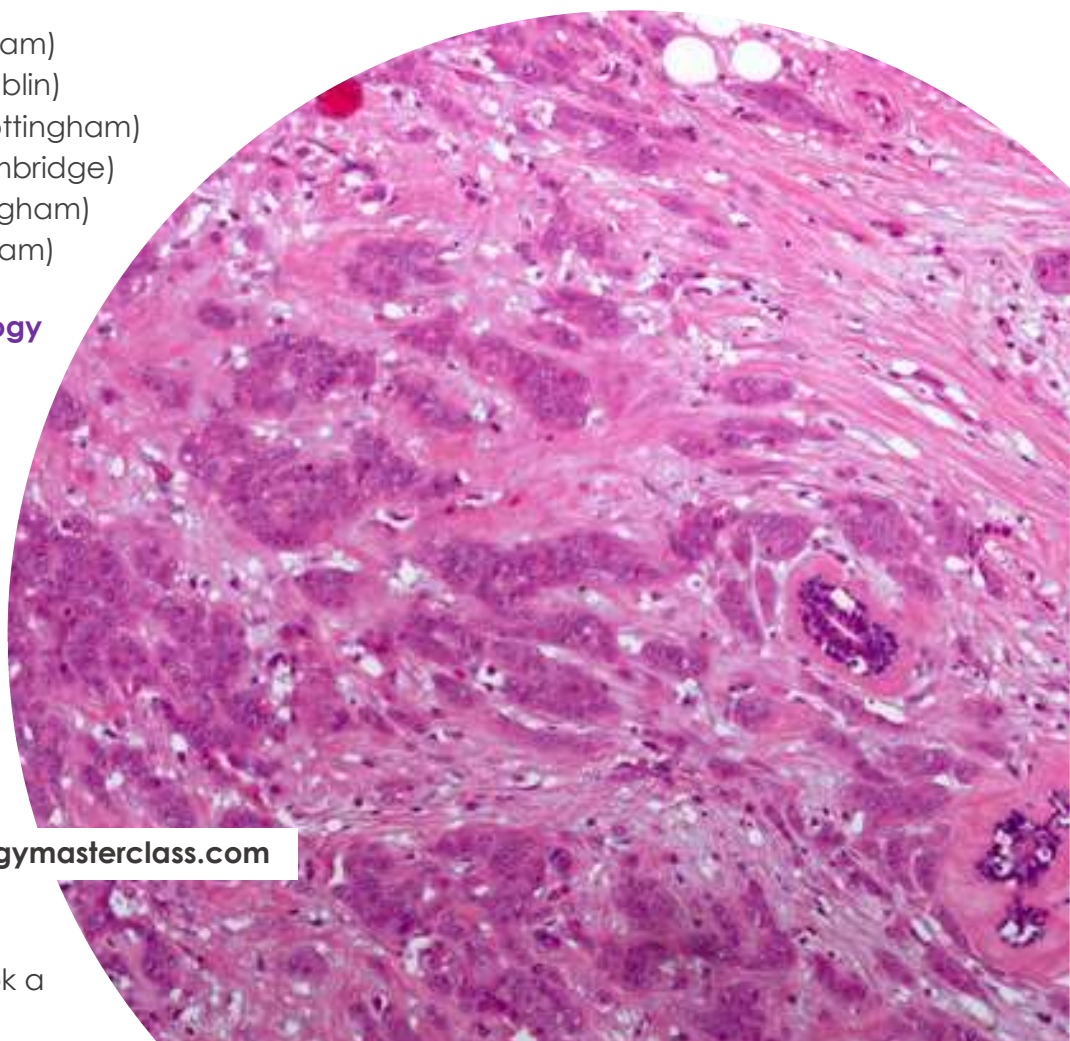
We are delighted to be presenting two online masterclasses in 2021, on 27 May and 16 July.

Each focuses on different areas to enhance knowledge, skills and techniques.

Find out more about the 16 July programme at:

**[nottinghambreastpathologymasterclass.com](https://nottinghambreastpathologymasterclass.com)**

Attend either event, or for maximum benefit and registration discounts, book a place on each.



**Course Director:** Professor Emad Rakha



**University of  
Nottingham**  
UK | CHINA | MALAYSIA

[nottinghambreastpathologymasterclass.com](https://nottinghambreastpathologymasterclass.com)

# NOTTINGHAM Breast Pathology Online Masterclass

Addressing Challenges in Diagnostic Breast Pathology

## Programme – 27 May

Time (UTC)	Speaker*	Topic
09.25	ER	Welcome
09.30	IOE	<b>WHO Updates on Breast Tumour Classification</b>
10.30	AS	<b>Challenging Breast Lesions (sclerosing and lobular lesions)</b>
11.00		Break
11.15	EP	<b>Use of IHC in Diagnostic Breast Pathology, and Pitfalls</b>
11.45		<b>Slide Seminar 1:</b> Viewing cases and case discussion**
12.30		Lunch
13.15	EP	<b>Challenges in Reporting Needle Core Biopsy</b>
13.45		<b>Slide Seminar 2:</b> Viewing cases and case discussion**
14.30	CQ	<b>Biphasic Breast Lesions (updates)</b>
15.10		Break
15.25	ER	<b>Assessment of Receptors in Breast Cancer, and Pitfalls</b>
15.45		<b>Slide Seminar 3:</b> Viewing cases and case discussion**
16.15	ER	<b>Challenges in Reporting Breast Cancer (improving concordance)</b>
16.35	All	<b>Meet the Experts (Q&amp;A)</b>
17.00		<b>Close</b>

**Course Moderator:** Dr Areeg Abbas

\* ER: Emad Rakha, IOE: Ian Ellis, AS: Abeer Shaaban, CQ: Cecily Quinn, EP: Elena Provenzano

\*\* Digital slides will be available online

## Registration / Fees

Reserve your place at [nottinghambreastpathologymasterclass.com](http://nottinghambreastpathologymasterclass.com)

27 May		16 July		27 May <u>and</u> 16 July	
Early bird	£60	Early bird	£60	Early bird	£100
On or after 1 April	£70	On or after 1 June	£70	On or after 1 April	£120

Book both online masterclasses together and save money.

The masterclass is accredited with 7 CPD points



**Course Director:** Professor Emad Rakha



University of  
Nottingham  
UK | CHINA | MALAYSIA

[nottinghambreastpathologymasterclass.com](http://nottinghambreastpathologymasterclass.com)